

GOLDEN YEARS
david bowie - inelco

uitzending op tros radio hilversum III donderdag
van 14.00 tot 16.00 uur (hugo van gelderen)

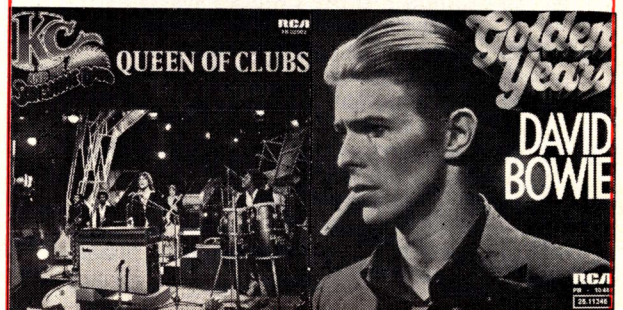
- | | | | | | |
|----|----|--|----|----|---|
| 1 | — | GOLDEN YEARS - david bowie
(d. bowie) bowie - rca 10.441 - inelco | 16 | 19 | MOTORCYCLE MAMA - harpo (ben palmers)
harpo/palmers - emi 5c006.35269 - emi bovema |
| 2 | 3 | TURKEY TURKEY - dizzy man's band
(ouwens) smak/kloes - emi 5c006.25351 - emi bov. | 17 | 20 | OPERATOR, OPERATOR (get me a line) - long tall
ernie & the shakers (eggermont), 2050383, polydor |
| 3 | 4 | FALLEN ANGEL - rogue
(fletcher) fletcher/flett - negram ng 683 - negram | 18 | 21 | IN FOR A PENNY - slade
(chas chandler) holder/lea - 2058663 - polydor |
| 4 | 11 | 'T KLEINE CAFÉ AAN DE HAVEN - vader abraham
(pierre kartner) boem/elf prov. 65019 - dureco | 19 | 22 | SWEET LOUISE - carlsberg
(arti kraayeveld) arti kraayeveld - wb 16669 -wea |
| 5 | 12 | TITLES - barclay james harvest
(mazer) arr. john lees - polydor 2058.656 - polydor | 20 | 24 | DU COTE DE CHEZ SWANN - dave
(souplet) loiseau/cywie - cbs 3832 - cbs |
| 6 | 9 | CHARLIE BROWN - two man sound
benito di paula - killroy kr 2153 ks - telstar | 21 | 29 | WAAR BLIJFT DIE OUDERWETSE WINTER -
marc winter - (kraamer) kraamer/kars - basf |
| 7 | 10 | CHANGE WITH THE TIMES - van mccoy & soul
city symph. (mccoy) mccoy - avco 16.382 - ariola | 22 | 26 | MONEY HONEY - bay city rollers
(wainman) faulkner/wood - bell 5c 006.97179 - bov. |
| 8 | 25 | HOW HIGH THE MOON - gloria gaynor
(monardo)/lewis/hamilton - mgm 2006.558 - polyd. | 23 | 23 | CHRISTMAS SONG - shawn philips
(j. weston) shawn philips - a&m 10841 - ariola |
| 9 | 28 | IT'S RAINING IN MY HEART - lee towers
(w. luikinga) w. tax - ariola 16508 at - ariola | 24 | 27 | ONWEER - rob de nijs (b. de groot)
broughton/engelder - philips 6012.572 - phonogr. |
| 10 | 14 | LOVE ME, HONEY - sandra
(h. v. hemert) v. hemert - ph. 6012.549 - phonogr. | 25 | 30 | LOVE ME LIKE A LADY - ginny royce
(r. en f. bolland) bolland & bolland - S 609, basart |
| 11 | 13 | TELL IT LIKE IT IS - mariska veres
(zwart) davis/diamond - pe 22.099 - dureco | 26 | — | QUEEN OF CLUBS - kc and the sunshine band
(finch) casey/clarke - rca xb 2002 - inelco |
| 12 | 17 | SATISFACTION - rolling stones (oldham)
jagger/richard - decca 6103.093 - phonogram | 27 | — | FIRE ON THE MOUNTAIN - the marshall tucker b.
(hornsby) mccorkie - capricorn 2089.018 - polydor |
| 13 | 18 | DISCO DOLLY - blue diamonds
(hilberts) hilberts - emi 5c 006.5342 - bovema | 28 | — | SING A SONG - earth, wind & fire
(white/stepney) white/mckay - cbs 3859 - cbs |
| 14 | 16 | LADY - supertramp (supertramp/ken scott)
hodgson/davies - a&m 16469 at - ariola | 29 | — | WHAT CAN I DO - mike rondell
(e. ouwens) k. v. driel - basf 15.732 - basf |
| 15 | 15 | EVERY GIRL in the world tonight - bill amesbury
(amesbury) amesbury - emi 5c006.97205 - emi bov. | 30 | — | SILVER QUEEN - buffoons
(luikinga) carter/shakespeare - ar. 16.535 - ariola |

Successen van het afgelopen en volgend jaar

- CONNIE VANDENBOS (platina 100.000 lp's)
- SILVER CONVENTION (gouden trio)
- GINNY ROYCE (wonderlady)
- PETER HOLLESTELLE (all-time)
- DONNA SUMMER (het begon allemaal met "The Hostage")
- MARX (kapitaal talent)
- DWIGHT THOMPSON (belofte voor 1976)
- FRED STUGER (million-seller)
- FAUSTO PAPETTI (nooit weggeweest)
- COCK VAN DER PALM (nu solo)

BASART RECORDS INTERNATIONAL B.V.

TWEE SENSATIONELE NIEUWE HITS



KC AND THE SUNSHINE BAND Queen Of Clubs DAVID BOWIE Golden Years

inelco